



MODULAR PREFABRICATED BUILDING SOLUTIONS

www.epack.in

COMPANY PROFILE



Established in 1999 and headquartered in Greater Noida, EPACK PREFAB is one of India's leading manufacturers of Modular Prefabricated Building Systems, Pre-engineered Steel Buildings (PEB's), Insulated Sandwich Panels, and Cold Chain Infrastructure. With over 25 years of experience and four state-of-the-art factories in Uttar Pradesh, Rajasthan, and Andhra Pradesh, we deliver 1,87,000 MT of PEB's and 1.31 million sqm of Panels annually. Operating across all 28 states, our turnkey solutions ensure faster construction, cost savings, energy efficiency, and global quality standards.



PAN India
Projects Executed



2007
Projects Delivered in Last 3 years

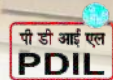


35,470,629
Safe Man Hours

CERTIFICATIONS



EMPANELMENTS



END TO END PROJECT SOLUTION



On-Site Consultation



Design



Manufacturing



Project Management



Delivery



Construction

OUR PRODUCTS & APPLICATIONS

MODULAR PREFABRICATED BUILDINGS

- Accommodations
- Schools/Hospitals
- Construction Site Offices
- Relief Camps etc...



INSULATED SANDWICH PANELS

- PUR/PIR Insulated Panels
- EPS Insulated Panels
- ROCKWOOL Insulated Panels
- GLASSWOOL Insulated Panels



PRE ENGINEERED BUILDINGS

- Warehouses
- Factory Sheds / Industrial Buildings
- Multi-storey Buildings
- Commercial Buildings etc...



LGSF BUILDINGS

- High Rise Buildings
- Transit Camps
- Office Buildings
- Villa / Cottages etc...



Structures

Builtup & Hot Rolled Section



Cold Formed Structures



Hollow Sections



Roof & Wall

Insulated Sandwich Panels



Light Gauge Steel Framing



Single Skin Sheet



Standing Seam Roof



Insulation



PUR/PIR
EPS
Rockwool
Glasswool



Bubble / XLPE



Flooring



All India Presence with STATE-OF-THE-ART MANUFACTURING FACILITY

Production Capacity
1,33,924 MT / annum PEB
13,10,000 sqm / annum Panel

PEB Plant Capacity: 38,262 MT
Panel Capacity: 510,000 Sqm
Land Area: 258,808 sqft.
Built up Area: 201,876 sqft.



Unit 1 & 2
Greater Noida, Uttar Pradesh

PEB Plant Capacity: 27,550 MT
Land Area: 215,278 sqft.
Built up Area: 145,000 sqft.



Unit 3
Ghiloth, Rajasthan

PEB Plant Capacity: 68,112 MT
Land Area: 886,946 sqft.
Built up Area: 487,820 sqft.

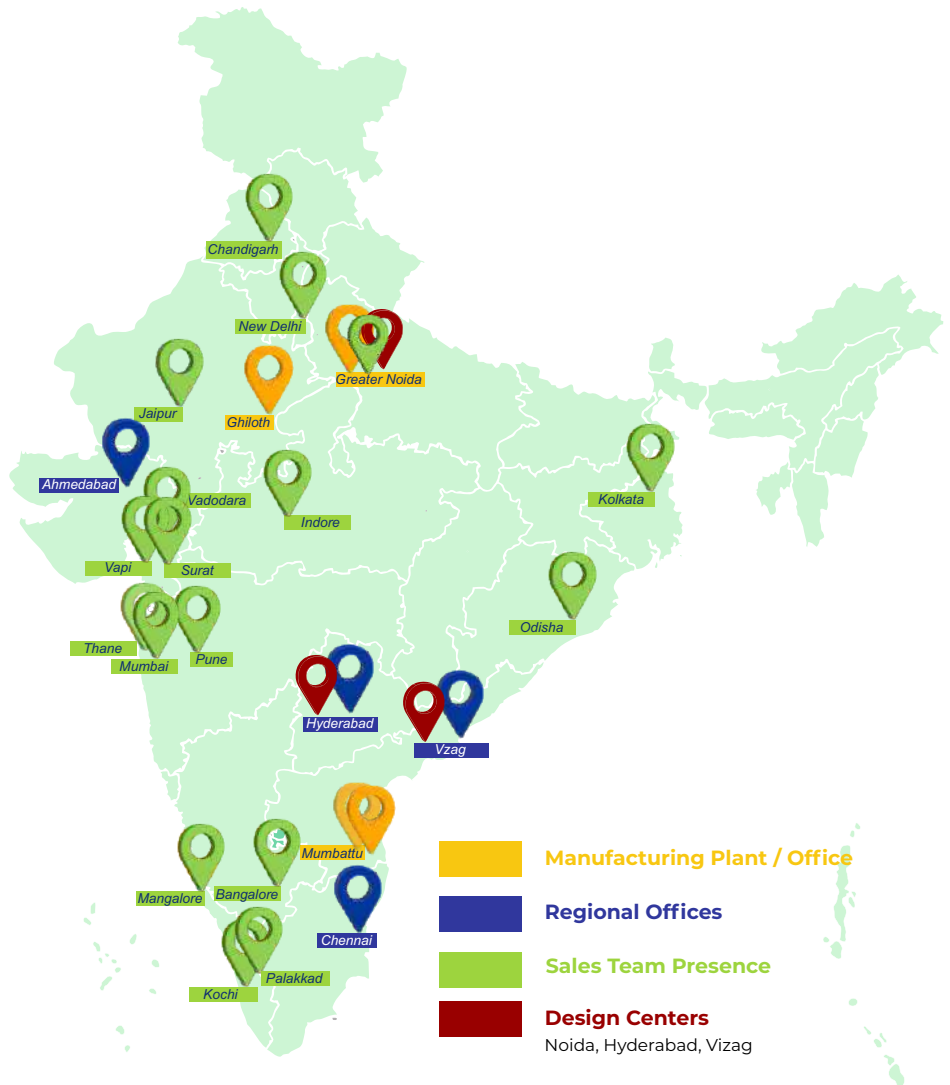


Unit 4
Mumbatu (Tirupati), Andhra Pradesh

Panel Capacity: 8,00,000 Sqm
Land Area: 1,33,995 sqft.



Unit 4 A
Mumbatu (Tirupati), Andhra Pradesh



REGIONAL PRESENCE

Hyderabad, Vizag, Chennai, Mangalore
Kochi, Palakkad, New Delhi, Noida, Jaipur
Mumbai, Thane, Pune, Ahmedabad, Vadodara
Vapi, Surat, Indore, Kolkata, Bangalore
Jamshedpur, Patna, Coimbatore, Chandigarh
Guwahati, Bhubaneswar



Scan for
360 Plant View





CONTINUOUS H-BEAM WELDING MACHINE



CNC PLASMA CUTTING MACHINE



SHOT BLASTING MACHINE



SHEARING MACHINE



CNC PUNCHING MACHINE



POWER PRESS MACHINE



ROOF PROFILE MACHINE



CONTINUOUS SANDWICH PANEL MACHINE



CANON FOAMING MACHINE



LGSF MACHINE



C / Z PURLIN MACHINE



BENDING MACHINE



DECOILING MACHINE



DOUBLE BELT MACHINE



ROLL FORMING MACHINE



PANEL COOLING MACHINE



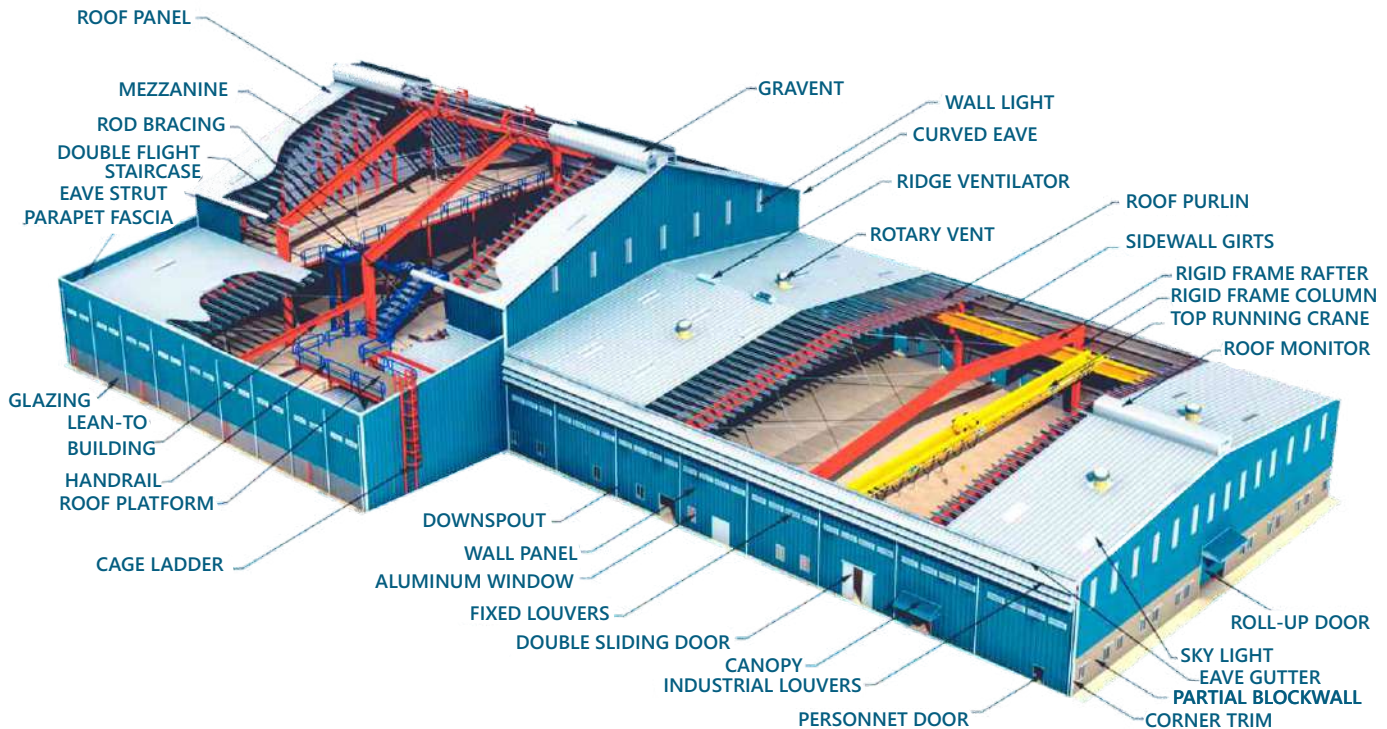
AUTO STACKING MACHINE



AUTOMATIC PANEL WRAPPING MACHINE

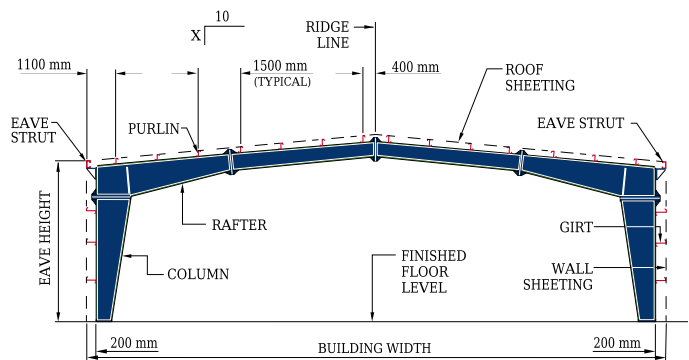
PRE ENGINEERED BUILDINGS

EPACK PREFAB has been a leader in the design, manufacture and installation of Pre Engineered Buildings for over decades. With strategic manufacturing plant locations and PAN India presence of sales network, we efficiently service customers throughout India and beyond. Our Pre Engineered Buildings are fully customized to fit our customer's unique needs to provide sophisticated, energy efficient, and environmentally friendly building solutions.



FRAMING SYSTEM

System	Maximum Practical Width (m)
Clear Span (CS)	80m
Multi-Gable (MG)	80m
Multi-Span 1 (MS-1)	70m
Multi-Span 2 (MS-2)	70m
Multi-Span 3 (MS-3)	70m
Single Span EOT Crane	30m-crane Bracket & I Section Beam Provision
Single Slope (SS)	50m
Lean-To (LT)	24m



BENEFITS



Reduce Upto 50%
Total Construction
Time



Faster Occupancy
And Earlier Realization
Of Revenue.



Optimized By The
Computerized Design
Program.



Fast Delivery



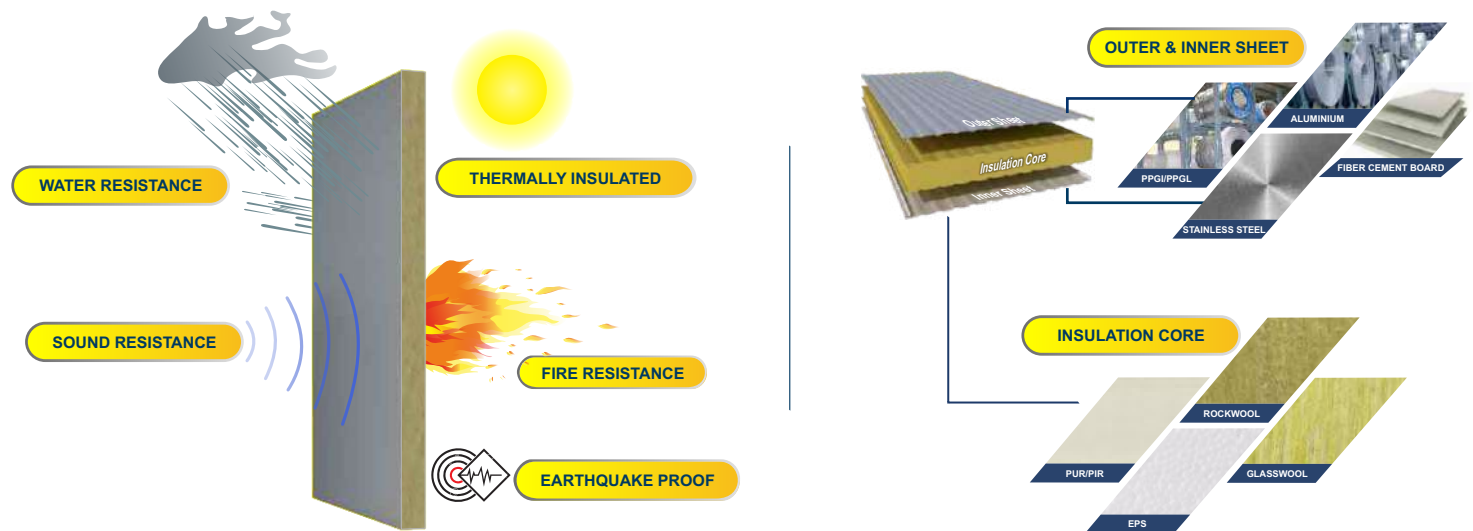
Eco-Friendly



INSULATED SANDWICH PANELS



EPACK PREFAB manufactures high-performance Insulated Continuous Line Sandwich Panels, designed for superior thermal efficiency, fire safety, and durability. Available with PUR/PIR, EPS, Rockwool, and Glasswool cores, they offer optimal insulation and energy savings for industrial, commercial, and residential applications like cold storage and modular buildings. Our panels are eco-friendly, CFC and HCFC-free, with zero ODP ratings, and made from recyclable materials and supporting green building certifications.



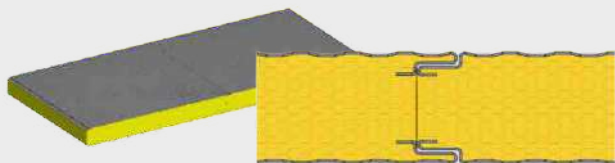
PANEL TEST REPORTS



PANEL NAME	TEST TYPE	TEST STANDARD	TEST RESULTS
Rock Wool Panel	Fire Resistance Test (2 HRS)	BS 476-20:1987 & BS 476-22:1987	Integrity: 120 minutes, Insulation: 120 minutes
PUF Panel	Thermal Conductivity Test	ASTM C518-2016	Thermal Conductivity: 0.01985 W/mK (Requirement: max. 0.023 W/mK)
PUF Panel	Water Vapor Transmission Rate	IS 11239: 2014 (Part-4)	Mean: 1.21 ng/pa.s.m (Requirement: 5.5 max for PUR-1)
PUF Panel	Compressive Strength (10% Core deformation)	ASTM D1621-2016 (RA-2023)	Mean: 137.3 kN/m ² (Requirement: 115 min for PUR-1)
PUF Panel	Apparent Density Test	ASTM D1622-20	Mean: 40.2 kg/m ³
PUF Panel	Tensile Strength Test	ASTM D1623-17 (Reapproved 2023)	Mean: 386.8 kPa
PUF Panel	Closed Cell Content	IS:11239 (Part5)- 2009 (Method- 2)	Mean: 95.4% (Requirement: 85% min)
PUF Panel	Dimensional Stability	ASTM D2126-2015	At 70°C for 24 hours: (-) 0.88% (Requirement: ±2%)
PUF Panel	Water Absorption Test	IS 11239: 1988 (Part-9)	Mean: 0.55% by volume
PUF Panel	Climbing Drum Peel Test	ASTM D1781-1998 (2004)	Average: 0.71 N/mm
PUF Panel	Adhesion Strength	ASTM C297-2016	Mean: 233 kPa
PUF Panel	Flexural Strength	IS 11239-10,1985	Mean: 576 kPa
PUF Panel	CFCs & HCFCs Analysis	Not specified	All 37 CFC and HCFC compounds: Not Detected (MQL: 1 mg/kg)
PUF Panel	Fire Ignitability Test	BS 476 Part 5:1979	Index of Performance: P, constant mass at a temperature of 23 ± 2°C and a relative humidity of 50 ± 5%
PUF Panel	Horizontal Burning Characteristics	IS:11239(Part12)-1988	Mean Burning Extent: 12mm

EPACK SANDWICH PANEL PROFILES

EPACK SINGLE GROOVE WALL PANEL



Types of Ribbing	Standard Rib, Micro Rib	
Types of Panels	PIR/PUR	Rockwool Panels
Thickness	30/40/50/60mm	50mm
Width *	1150mm	1150mm

* ALSO AVAILABLE IN WIDTH 1000MM IF ORDER QUANTITY IS LARGE

EPACK DOUBLE GROOVE WALL PANEL



Types of Ribbing	Standard Rib, Micro Rib	
Types of Panels	PIR/PUR	Rockwool Panels
Thickness	60/80/100/120/150mm	80/100mm
Width *	1100mm	1100mm

* ALSO AVAILABLE IN WIDTH 950MM IF ORDER QUANTITY IS LARGE

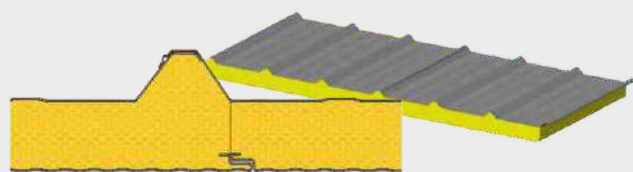
EPACK HIDDEN SCREW WALL PANEL



Types of Ribbing	Standard Rib, Micro Rib	
Types of Panels	PIR/PUR	Rockwool Panels
Thickness	50/60mm	50/60mm
Width *	1050mm	1050mm

* ALSO AVAILABLE IN WIDTH 900MM IF ORDER QUANTITY IS LARGE

EPACK ROOF PANEL



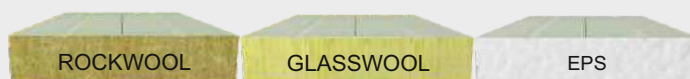
Types of Ribbing	Standard Rib, Micro Rib	
Types of Panels	PIR/PUR	Rockwool Panels
Thickness	30/50/60/80mm	50/80mm
Width	1100mm	1100mm

EPACK CAMLOCK WALL PANEL



Types of Panels	PUF Panel
Thickness	40/50/60/80/100/120/150mm
Width	1200mm

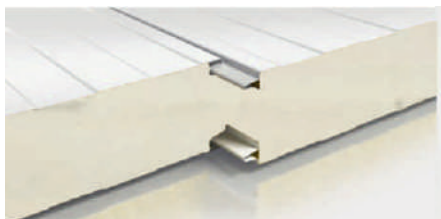
EPACK OTHER PANELS



Types of Panels	Thickness	Width
Discontinuous PUF Roof	30/40/50/60/80/100/120mm	993mm
Rockwool	50/60/80/100/120mm	1170mm
Glasswool	50/60/80/100mm	1170mm
EPS	40/50/60/80/100/120/150mm	1170mm

TECHNICAL DATA SHEET

PUR/PIR PANEL



Thickness (MM)	PUR U- value (W/m ² .K)	PIR U- value (W/m ² .K)
40.0	0.5	0.46
50.0	0.41	0.37
60.0	0.34	0.32
80.0	0.26	0.24
100.0	0.21	0.19
120.0	0.18	0.16
150.0	0.14	0.13

Properties	Polyurethane Foam(PUR)	Polyisocyanurate Foam (PIR)
Insulation	CFC & HCFC FREE RIGID POLYURETHANE FOAM (PUF) AS PER IS 12436 STANDARD	CFC & HCFC FREE RIGID Polyisocyanurate FOAM (PIR) AS PER IS 12436 STANDARD
Foam Overall Density	40±2kgm ³	40/42±2kgm ³
Foam Thermal Conductivity (K-Value) at 10Å°C mean Temp	0.023 W/m K	0.023 W/m K
Compressive Strength @ 10% deformation	2.10kg/cm ²	2.10kg/cm ²
Tensile Strength	2.5 kg/cm ²	2.5 kg/cm ²
Flexural/ Bending Strength	3.0 Kg/cm ²	3.0 Kg/cm ²
Shear Strength	2.5 Kg/cm ²	2.5 Kg/cm ²
Closed Cell Contents	90-95%	90-95%
Horizontal Burning Characteristics	125 mm (Extent of Burn)= Max, Fire Retardant, Self Extinguishing Quality Foam	25 mm (Extent of Burn) - Max, Fire Rated
Water absorption	0.2% volume at 100% RH - Max	0.2% volume at 100% RH - Max
Water Vapour Permeability	0.12 ng/pasm at 88% RH & 38°C - Max	0.12 ng/pasm at 88% RH & 38°C - Max
Dimensional Stability at -25°C Cold Temp.	±2%	±2%
Dimensional Stability at +70°C Hot Temp.	±2%	±2%

ROCKWOOL PANEL



Thickness (MM)	Rockwool U- value (W/m ² .K)
40.0	0.8
50.0	0.66
60.0	0.56
80.0	0.43
100.0	0.35
120.0	0.29
150.0	0.24

Properties	Rockwool Panel
Insulation	Non-Combustible Rockwool Core with PPGS/PPGL Fascia
Overall Density	100±15 Kg/m ³
Thermal Conductivity (K-Value) at 10Å°C mean Temp	0.04 W/m K
Compressive Strength @ 10% deformation	0.50985 Kg/cm ²
Tensile Strength	0.3 Kg/cm ² (Estimated)
Flexural/ Bending Strength	0.7647 Kg/cm ²
Shear Strength	0.15 Kg/cm ² (estimated)
Closed Cell Contents	0% (Open-Fiber Structure)
Horizontal Burning Characteristics	Highly Fire Resistant (Non-Combustible)
Water absorption	Less than 1%
Water Vapour Permeability	150 ng/pasm at 88% RH & 38°C (Estimated)
Dimensional Stability at -25°C Cold Temp.	±1%
Dimensional Stability at +70°C Hot Temp.	±1%

K-HOUSE MODULAR STRUCTURES

DIY-style, Nut-bolt Free Prefabs Perfect For Site Offices And Accommodations.



Pre-Engineered
Modular Panels



No Welding, Quick
Plug-play Assembly



Load Capacity:
Up To 200 Kg/m²



Seismic Resistant
(grade 7)



Windsafe
Up To 120 Km/h

CONFIGURATIONS



G+0 (3P)



G+1 (6P)



G+2 (9P)



Bunk Beds



Canteen Area



Washrooms



Walkway



Staircase



Mass Housing



G+1 Accommodation

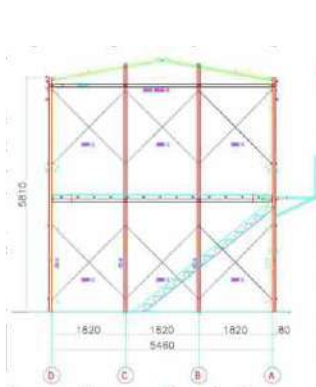


Ground Storey Accommodation

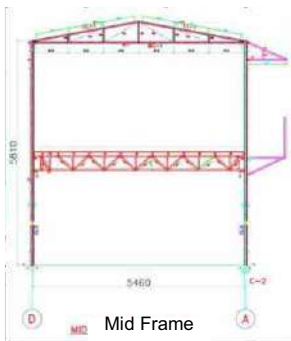


Labor Colony

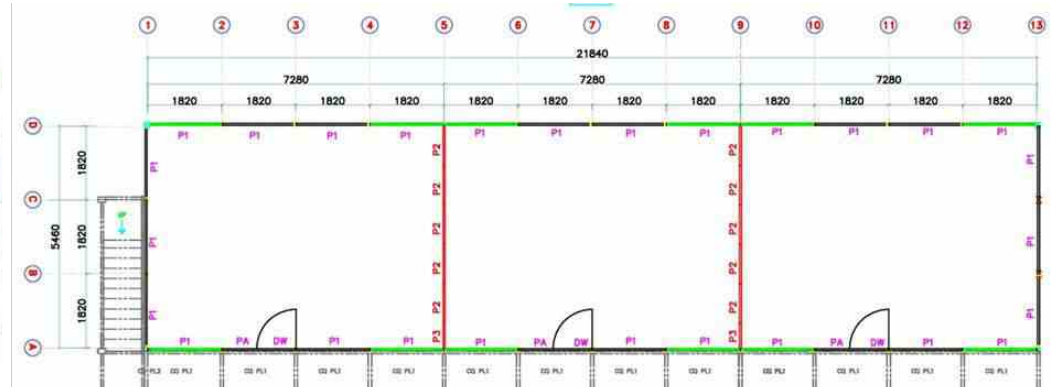
DRAWING & LAYOUTS



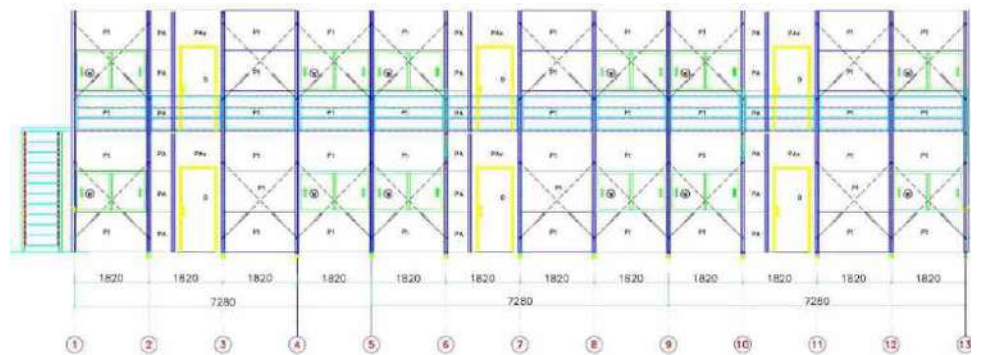
Gable End Frame



Mid Frame

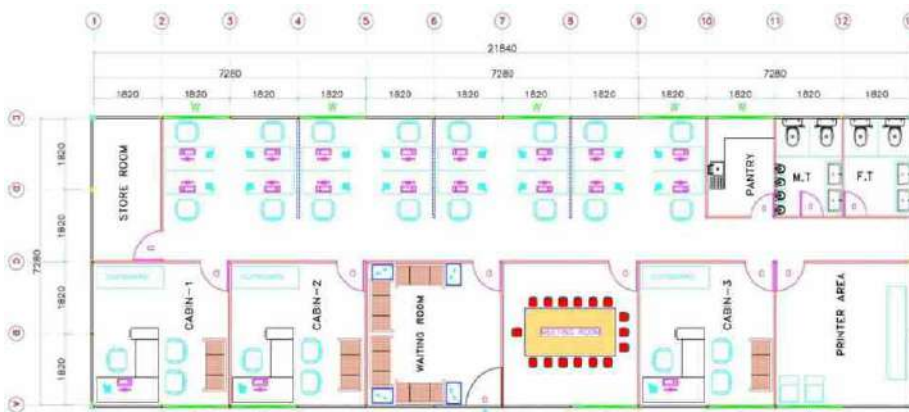
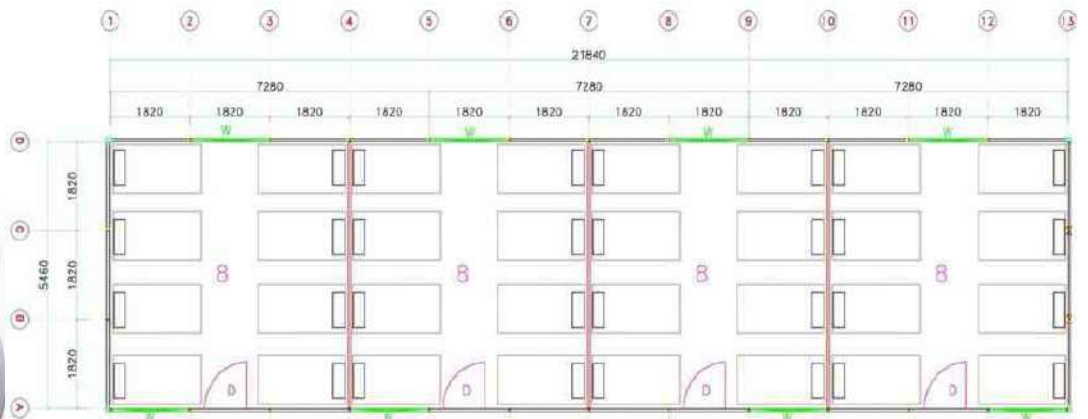


Floor Plan



Front View

ENGINEERS / LABOUR
ACCOMMODATION
(12K X 3K X 3P)



SITE / TIME OFFICE
(12K X 4K X 3P)



STRUCTURAL PANEL BUILDING SYSTEMS

Complete Modular Structural System Using Load-bearing Steel-reinforced Insulated Panels.

KEY FEATURES

- Galvanized Steel Load-bearing Wall Panels
- Insulated With PUR / PIR , EPS , Rockwool , Glasswool
- High-performance Galvanized & Painted Roof Panels
- Integrated MEP (Lighting, Conduits, Switches)
- Pre-fitted Sanitary Options
- Aluminium/PVC Double-glazed or Sliding Windows
- Custom Doors: Steel, Aluminium, or Sandwich Panel



BENEFITS



Fast Assembly
(Upto 100 Sq.m./Day
/Team)



Fire-rated And
Thermally Efficient



Factory-finished Panels
For Consistent Quality



Complies With IS 800
& IS 1893 Standards



Ideal For Remote And
Project-based Buildings



SANDWICH PANEL FACADE & WALL PARTITION BUILDING SYSTEMS

Economical Structures With Steel Frame & Insulated Sandwich Panels.

KEY FEATURES

- Galvanized H-profile Columns, Trusses, And Purlins
- Wall & Roof Made With High-density PUR / PIR / EPS / Rockwool / Glasswool Sandwich Panels
- Gutters, Downspouts, And Complete Water-proofing
- External / Internal Doors And Windows (Custom Options) Electrical And Plumbing Provisions Integrated



BENEFITS



Energy Efficient & Acoustically Insulated



Rapid Onsite Erection



Fire & Weather -Resistant



Flexible Layout Design



Ideal For Offices, Schools Canteens & Industrial Buildings



EPACK LIFTABLE CABINS

EPACK Prefab Liftable Cabins is built on efficiently designed structures as per IS code, using steel frame and light-weight protective dry walls (sandwich panels) , It consists of Top Frame, Bottom Frame, 4 Posts and Exchangeable Wall Panels which can be simply assembled in modules, with the components bolted together, and can be quickly assembled and dismantled.



BENEFITS



Foldable Design-fits Into Standard 40ft Shipping Containers



Factory-finished Floors, Walls & Ceilings



Assembled In Hours With Nut-bolt Connections

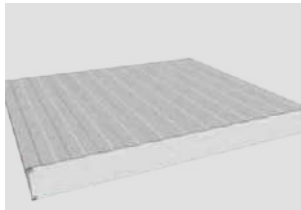


Made-To-Order Electricals, Hvac, Furniture (optional)



Superior Insulation With Rockwool Or PUF

COMPONENTS



Roof and Wall Panel

- 50mm thick sandwich panels.
- Pre painted Galvanized iron sheets on either side.



Floor Board

- 18mm Cement fiber board of EPACK approved make.
- Can be fixed on the floor with SD Screw.



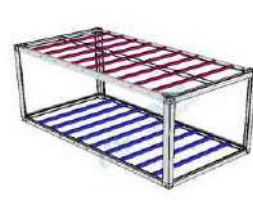
Door

- Made of sandwich panels.
- Same color as walls.
- 900 X 2100mm in dimension.



Window

- Made of powder coated (white color) aluminum extruded section.
- Non toughened window glass.
- 1200 x 900mm in dimension.



Steel Framing Structure

- Galvanized cold rolled with floor, Top and four corner post frame that support and give strength to the floor , Roof and wall Panel.



Temporary Staff Accommodation



Toilet Blocks / Guard Room



Site / Marketing Offices



Emergency Housing



LIGHT GAUGE STEEL FRAMING SYSTEMS

Light Gauge Steel Framing (LGSF) is a modern frame technology of building construction using cold-formed steel as the construction material. It can be used for Roof, Floor, Wall systems or for the entire buildings.



SYSTEM COMPOSITION

- Galvanized C, Z, U, Sigma sections (550 MPA)
- PUF / Rockwool / Glaswool Insulated Walls/Claddings



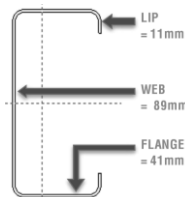
PUNCH & DIMPLE



NOTCH



KNOCKOUT



DETAIL SECTION PROFILE



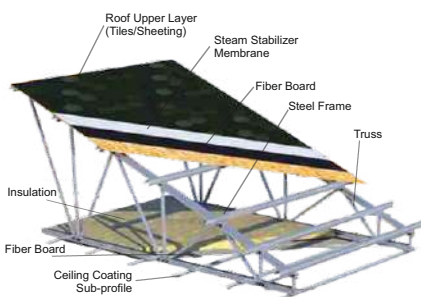
Lightweight &
Quick To Erect



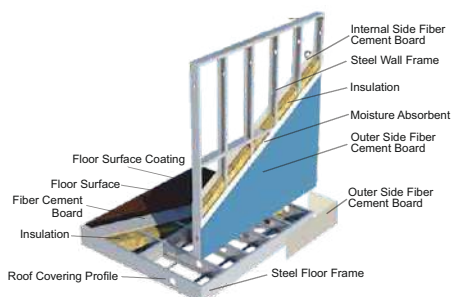
Highly Customizable
Layout



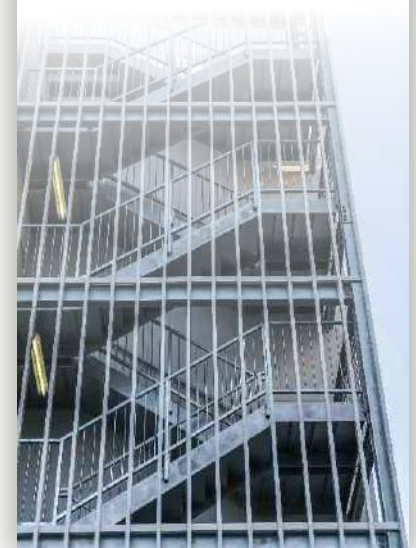
Long Life Frame With
Integrated Insulation



ROOF SYSTEM



WALL & FLOOR SYSTEM

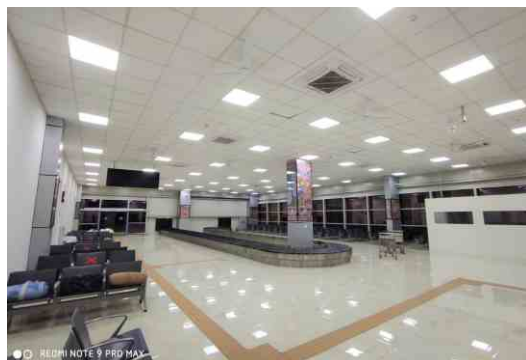




Office Reception



Waiting Area



Terminal Area



Washrooms



Halls



Site Infrastructures



Multi-storey Camps



Airport Infrastructure



Multi-storey Commercial Complexes

COLD STORAGE INFRASTRUCTURE

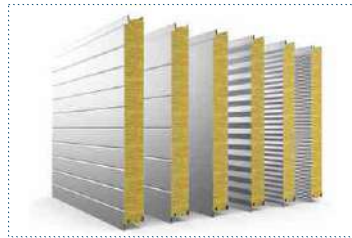
At EPACK Prefab we provide cold storage warehouse facilities that are well insulated, durable and designed to withstand the high wind and can be constructed in all weathers at any region, in order to create a safe, all-season space for storing fruits, vegetables, fish, meat, spices, etc. and keeping them fresh, cold and safe for consumption.



PANEL SPECIFICATIONS



Panel Core:
Hinge-density Closed-cell
PUF (40Kg/m³)



Panel Thickness Range
: 60mm to 150mm



Fire & Moisture
Resistant



Delivered With Sliding
/ Hinged Insulated
Doors

KEY BENEFITS



Knock-Down Format
For Site Assembly



Temperature Range
+15°C To -40°C



Energy-Efficient
Refrigerator
Systems Available



Suitable For Pharma,
Dairy, Meat, Seafood,
Floriculture, F&B



CLEAN ROOMS

At EPACK PREFAB, we provide clean room solutions for maintaining the perfect climatic conditions of products and personnel by providing end-to-end Wall, Ceilings, Floor, Window & Door solutions, that Provide an ultra-clean environment with effective control of airflow, pressure, temperature, humidity and filtration.

CLEAN ROOM STANDARDS

The cleanliness of a clean room is measured by the size and number of dust particles in a given volume of air .The rating or classification by the number of particles in a given volume of air and under specific conditions is called cleanliness level class. Regulations may vary from country to country, but in most places, the national rule is established by referring to US Federal standard 209E by the number of particles with a diameter 0.5 micron meter or larger contain in one cubic meter of air .



ADVANTAGES



60% Faster Setup Vs.
Conventional Build



Low Operational
& Maintenance Costs



Flexible, Expandable
Modular Design



Easily Relocated
Or Expanded



BIS and ISO 14644
Compliant

ISO AIR CLEANLINESS CLASSIFICATIONS-CLASS LIMITS(PARTICLES/m³)

ISO Classification Number	Maximum concentration limits (particles/m ³)					
	0.1 micron	0.2 micron	0.3 micron	0.5 micron	1 micron	5 micron
ISO CLASS 1	10	2				
ISO CLASS 2	100	24	10	4		
ISO CLASS 3	1,000	237	102	35	8	
ISO CLASS 4	10,000	2,370	1,020	3,52	83	
ISO CLASS 5	100,000	23,700	10,200	3,520	832	29
ISO CLASS 6	1,000,000	237,000	102,000	35,200	8,320	293
ISO CLASS 7				352,000	83,200	2,930
ISO CLASS 8				3,520,000	832,000	29,300
ISO CLASS 9				35,200,000	8,320,000	293,000

RECOMMENDED FOR RANK OF CLEAN ROOM FOR RELATED INDUSTRY

Rank	1	10	100	1,000	10,000	100,000	3,00,000
Semiconductor Chip Manufacturing	✓	✓	✓				
Semiconductor Chip Package		✓	✓				
Electronic Components Production			✓	✓			
Precision Products				✓	✓		
Medical Injections			✓	✓			
Medical Oral Agents					✓	✓	
Aseptic Ward			✓				
Operation Room			✓	✓	✓		
Aseptic Rearing Animals			✓	✓			
Precision Printing					✓	✓	✓
Food Packaging					✓	✓	✓
Food Canning			✓	✓			



MI HOMES

EPACK PREFAB Mi Homes are flatpack kit which is built on efficiently designed structures as per is code, surrounded by protective Sandwich Panels that can be simply and quickly erected to create a robust structure for different applications like security / railway cabins, police check post, temporary medical camps etc..

KEY FEATURES



Quick And
Easy to Install



Do It Yourself
Building



Thermally Insulated



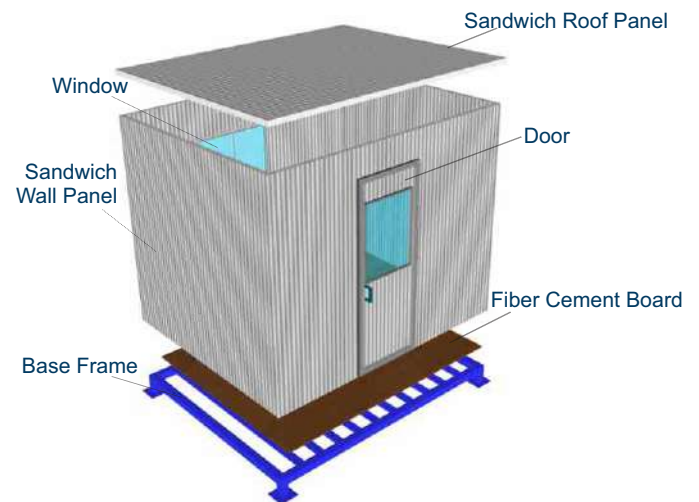
Eco Friendly



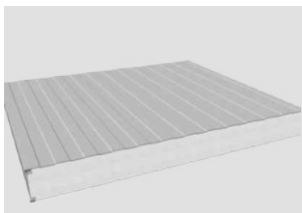
Multiple Layout
And Color Options



Durable And
Maintenance Free



COMPONENTS



Roof and Wall Panel

- 50mm thick sandwich panels.
- Pre painted Galvanized iron sheets on either side.



Floor Board

- 18mm Cement fiber board of EPACK approved make.
- Can be fixed on the floor with SD Screw.



Window

- Made of powder coated (white color) aluminum extruded section.
- Non toughened window glass.
- 1000 x 900mm in dimension.



Door

- Made of sandwich panels.
- Same color as walls.
- 750 X 1800mm in dimension.

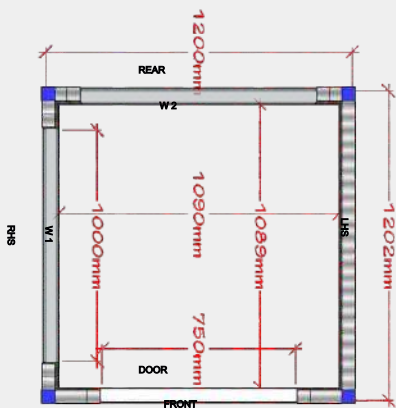


Base Frame

- Made Up Of Mild-Steel.

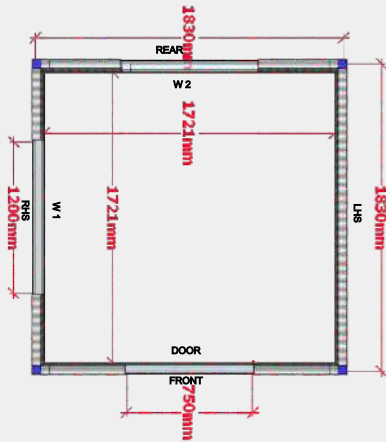
EPACK MI HOMES TYPES

MI GUARD ROOM



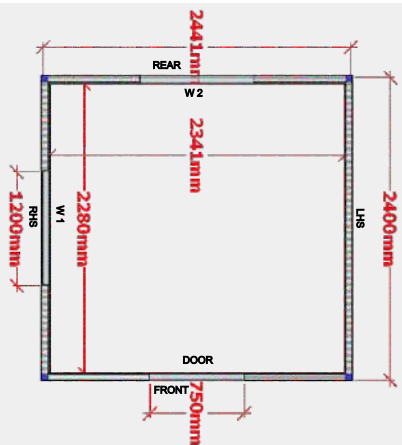
Dimension	4 x 4ft
Height	7ft
Sandwich Panel Roof and Wall	50mm
Door Size	750x1800mm
Window Size	1000x900mm
No Of Windows	02
Floor	18mm fiber cement boards
Electrical Fittings	in built
Total Weight	164kg

MI CABIN



Dimension	6 x 6ft
Height	7ft
Sandwich Panel Roof and Wall	50mm
Door Size	750x1800mm
Window Size	1200x900mm
No Of Windows	02
Floor	18mm Fiber Cement Boards
Electrical Fittings	In Built
Total Weight	284kg

MI SHELTER



Dimension	8 x 8ft
Height	7ft
Sandwich Panel Roof and Wall	50mm
Door Size	750x1800mm
Window Size	1200x900mm
No Of Windows	02
Floor	18mm Fiber Cement Boards
Electrical Fittings	In Built
Total Weight	436kg

APPLICATIONS

Mass Accommodation

Site/Marketing Office

Ticket Counters

Toilet Blocks

Temporary Health Center

Guard Rooms



MODULAR PREFAB BUILDING PROJECTS



G+2 Amarnath Yatri's Transit Camps For CPWD



G+1 Eye Care Hospital For Dr Shroff's Charity Hospital



G+3 Medical College For Keystone



G+1 Accommodation & Club Building For SJVN Thermal



Prefabricated Employee Colony For Hero Motocorp



G+2 Labour Accommodation For Shapoorji Pallonji



Hostel Building For NLC India Limited



G+2 Accommodation Building For L&T



Site Infrastructure For Adani Group



Roof Top Hospital Building For W Pratiksha



Army Accommodation At Kashmir House For MES



Staff Accommodation Building For NTPC



Institutional Building For Ugen Trading Bhutan



Site Infrastructure For Hindalco



3600 Peoples Accommodation For JSPL



2000 Peoples Accommodation For Jindal Renewable



Prefabricated Site Office For L&T



Prefabricated Site Office For NCC



Site Infrastructure For Airports Authority of India



Project Site office For SJVN





Institutional Building For JRE Group



School Building For DPS



Kids Play School For Teri Perikriti



Office Building For Hankuk



Prefabricated Cricket Stadium





LGSF Squash Court Building For SAI



Clean Room For HiLife Interior



Cold Storage For Shantinath Coldstorage



Banquet Hall For AAI



Site infrastructure For PPL



Worker Accommodations For L&T



Ticket Counter Booths For Common Wealth Games

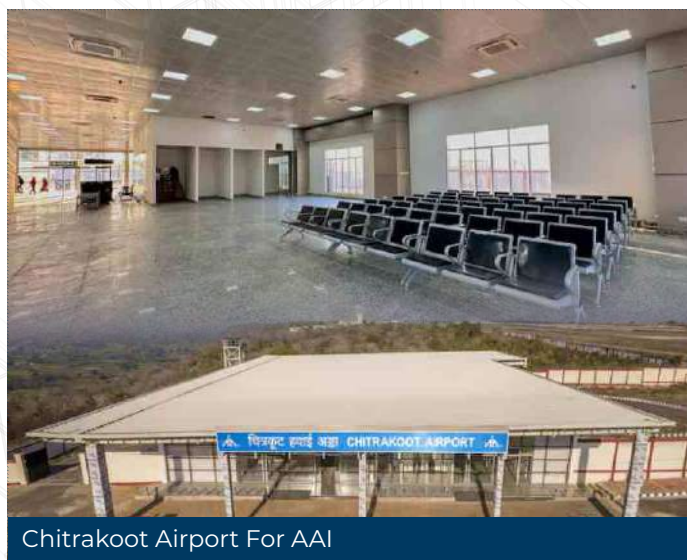


Roof Top School For Blue Bell School



Worker Accommodation For TATA Steel

INFRASTRUCTURE PROJECTS



FACTORY BUILDING PROJECTS



WAREHOUSE BUILDING PROJECTS



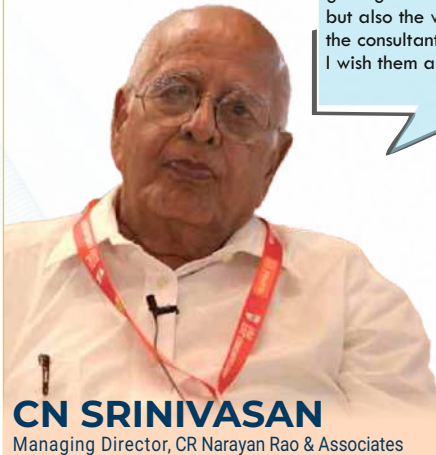
HIGHRISE BUILDING PROJECTS



TESTIMONIALS



“
We're currently working with EPACK on two projects, and I'm really impressed with how open-minded and responsive they are. They listen to our questions, welcome new ideas, and act promptly. This is a great sign because, with each job, they're getting better and better. This not only benefits them but also the whole industry and everyone involved – the consultants and the owners. I wish them all the best!



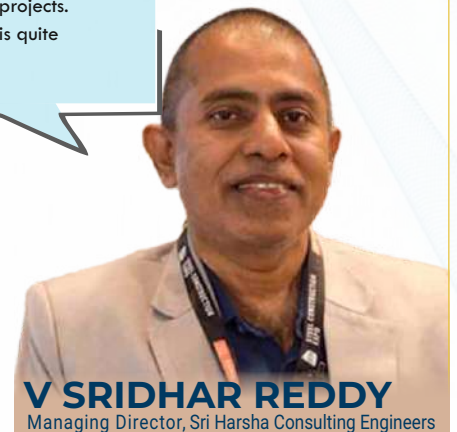
“
We are working with EPACK PREFAB, and we're really impressed. We visited their PEB manufacturing plants in both the north and south, and they have top-notch machinery. Personally, I'm interacting with Mr Sanjay Singhania and Jaideep Majumdar. They are very polite. EPACK PREFAB not only has a great PEB design team but also excellent manufacturing facilities. I wish the EPACK team all the best for their hard work.



“
I'm a lover of steel construction, and EPACK's been doing wonderful work. They've been doing wonderful work throughout the country. It's a wonderful experience. Thank you so much.



“
I know EPACK PREFAB for the last three years, and I've seen them quickly become a big player in Pre Engineered Building (PEB) projects. Their growth in such a short time is quite impressive.



“
I've been working with EPACK PREFAB since 2013, and we've recently completed some big projects together. EPACK is growing fast, and I believe they're on track to achieve great success. Best of luck for their future!







EPACK PREFAB CREATES **WORLD RECORD**

1,51,000 Sqft PEB Factory Building Erection in 150 Hours



Award presented to

Sanjay Singhanian (MD & CEO) & Nikhel Bothra (Executive Director)

AWARDS & ACHIEVEMENTS

Best HSE Award

IIN- Platinum
Awards 2025

CIA World

Best Pre- Engineered
Building Company
Award 2024

Silicon India

Top 10 Most Promising
Modular Construction
Companies Award
2024

Golden Book Of World Record

Fastest PEB Factory
Construction

CSCMP

Manufacturing
Excellence
Award 2021

CPWD

Fastest
Construction in J&K
Award 2021

52nd National

Safety Week
Safety Award 2023



EPIC MEDIA

Presents

CIA WORLD

10th

Infra Awards



Downloaded from <http://ajph.org/> on November 10, 2015

PARTICIPATIONS



Shaping Tomorrow's Infrastructure
Faster, Smarter, Greener



Branch Offices

Hyderabad	Chennai	Vizag	Ahmedabad
101 A, Trendz Sapphire Building HITECH City Hyderabad-500081 Telangana ,INDIA	152, 2nd Floor Guleacha Tower Somasundara Bharathi Nagar, Chennai, Tamilnadu 600026, INDIA	PEELA'S Mindspace Level-4,2-36-2 MIG 7 M.V.P Colony Sector-10 Visakhapatnam - 530017	1013, One World West, Sardar Patel Ring Road, Bopal, Ahmedabad Gujarat-380058,INDIA

Sales Team Presence

Hyderabad, Vizag, Chennai, Mangalore, Kochi, Palakkad, New Delhi, Noida Jaipur, Mumbai, Thane, Pune, Ahmedabad, Vadodara, Vapi, Surat, Indore Kolkata, Bangalore, Jamshedpur, Patna, Coimbatore, Chandigarh, Guwahati Bhubaneswar

Manufacturing Plants / Offices

Unit-1&2	B 13 & 14 Ecotech-1st Extension Greater Noida-201306 Uttar Pradesh, INDIA
Unit-3	SP5/128, Ghiloth Industrial Area, Ghiloth-301705 Rajasthan-INDIA
Unit-4	Plot No- 5, APIIC Industrial Park, Mambattu (Near Sricity), Tada Mandal Tirupati District-524401Andhra Pradesh, INDIA
Unit-4A	Plot No- 6, APIIC Industrial Park, Mambattu (Near Sricity), Tada Mandal Tirupati District-524401Andhra Pradesh, INDIA



Scan to Download
Technical & Product Brochure



Scan to Watch Project
Videos



+91-8130444466



enquiry@epack.in



www.epack.in