



RAPID CONSTRUCTION EXCEEDING EXPECTATIONS

# LIFTABLE PORTA CABIN

BUILD-QUICK™  
PREFAB SOLUTIONS

[www.epack.in](http://www.epack.in)



## COMPANY PROFILE

EPACK PREFAB is one of the leading manufacturer and Supplier of high-quality, energy-efficient Building Solutions for industrial and commercial applications.

The principal activity of the organization comprises:

- Pre Engineered Buildings
- Modular Prefabricated Buildings
- Insulated Continuous Line Sandwich Panels
- Light Gauge Steel Framing

Since the inception of EPACK PREFAB in 1999 at a prime location in Greater Noida, EPACK has grown to become one of the leading manufacturers of Prefabricated Structures and Sandwich Panels in India Producing More than 1,33,924 MT PEB and 13,10,000 sqm Sandwich Panels per annum, and has successfully delivered projects spanning millions of square feet across India.

 **PAN India**  
Projects Executed

 **35,470,629**  
Safe Man Hours

 **2007**  
Projects Delivered in Last 3 years

## TOTAL END TO END PROJECT SOLUTION



On-Site Consultation



Design



Manufacturing



Construction



Delivery



Project Management

# OUR PRODUCTS & APPLICATIONS



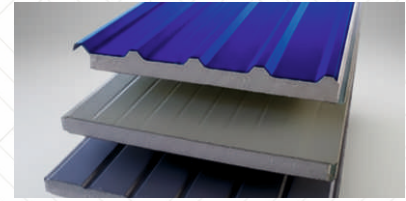
## MODULAR PREFABRICATED BUILDINGS

- Accommodations
- Schools/Hospitals
- Construction Site Offices
- Relief Camps etc...



## PRE ENGINEERED BUILDINGS

- Warehouses
- Factory Sheds / Industrial Buildings
- Multi-storey Buildings
- Commercial Buildings etc...



## INSULATED SANDWICH PANELS

- PUR/PIR Insulated Panels
- EPS Insulated Panels
- ROCKWOOL Insulated Panels
- GLASSWOOL Insulated Panels



## LGSF BUILDINGS

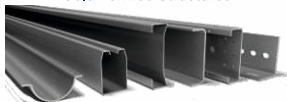
- High Rise Buildings
- Transit Camps
- Office Buildings
- Villa / Cottages etc...

### STRUCTURES

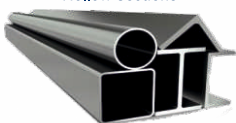
Builtup & Hot Rolled Section



Cold Formed Structures

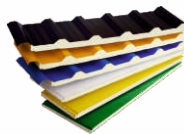


Hollow Sections



### ROOF & WALL

Insulated Sandwich Panels



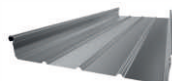
Light Gauge Steel Framing



Single Skin Sheet



Standing Seam Roof



### INSULATION



PUR/PIR  
EPS  
Rockwool  
Glasswool



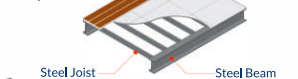
Bubble / XLPE

### FLOORING

Leveling Mortar  
Concrete  
Topping  
Steel Mesh  
Metal Deck Flooring  
Steel Beam  
Flooring Material Such as  
Tiles, Laminated Flooring,  
Parquet etc.



Flooring Material  
Such as Tiles,  
Laminated Flooring,  
Rubber Tiles,  
Carpets etc.  
Cement Board  
Steel Joist  
Steel Beam



# All India Presence with STATE-OF-THE-ART MANUFACTURING FACILITY



Scan for  
360 Plant View

\*Sandwich Panel Capacity  
13,10,000 sqm/annum

Panel Capacity: 510,000 Sqm/ Annum



**Unit 1 & 2**  
Greater Noida, Uttar Pradesh

Panel Capacity: 18,00,000 SQM /Annum



**Unit 5**  
Mumbatu(Tirupati), Andhra Pradesh

\*PEB Production Capacity  
1,33,924 MT/ annum

PEB Plant Capacity: 38,262 MT



**Unit 1 & 2**  
Greater Noida, Uttar Pradesh

PEB Plant Capacity: 27,550 MT



**Unit 3**  
Ghiloth, Rajasthan

PEB Plant Capacity: 68,112 MT

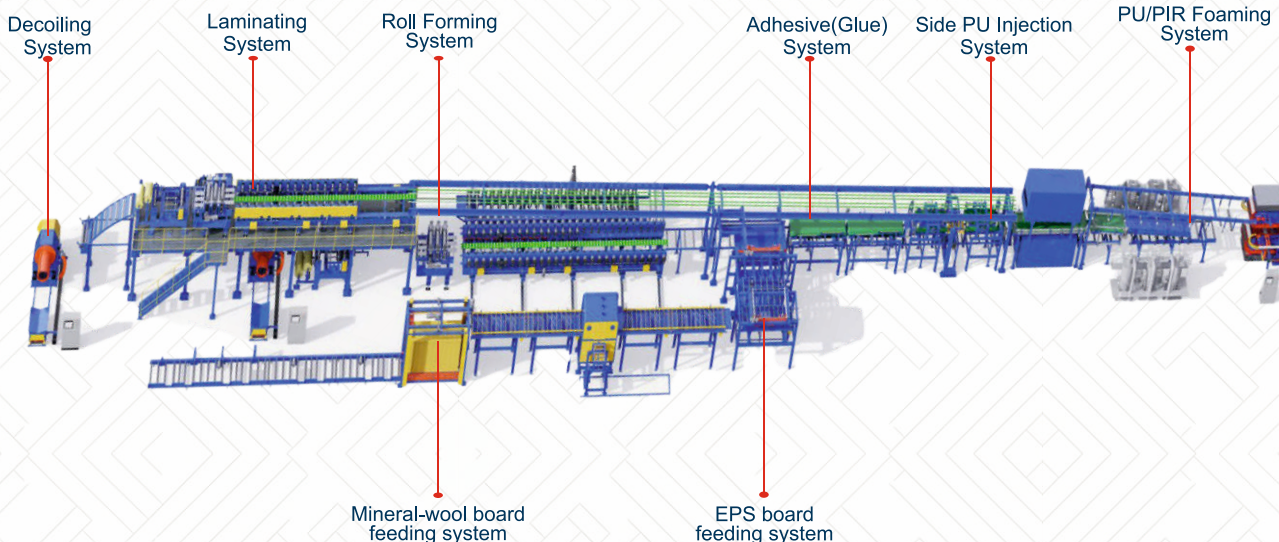


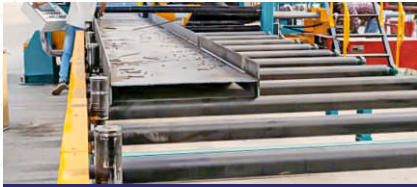
**Unit 4**  
Mumbatu(Tirupati), Andhra Pradesh



## REGIONAL PRESENCE

HYDERABAD | CHENNAI | AHMEDABAD | NEW DELHI | JAIPUR | BHUBANESWAR |  
MUMBAI | PUNE | VADODARA | VAPI | SURAT | KOLKATA | INDORE | BANGALORE |  
VIZAG | JAMSHEDPUR | PATNA | COIMBATORE | CHANDIGARH | GUWAHATI





CONTINUOUS H-BEAM WELDING MACHINE



CNC PLASMA CUTTING MACHINE



SHOT BLASTING MACHINE



SHEARING MACHINE



CNC PUNCHING MACHINE



POWER PRESS MACHINE



ROOF PROFILE MACHINE



CONTINUOUS SANDWICH PANEL MACHINE



CANON FOAMING MACHINE



LGSF MACHINE



C / Z PURLIN MACHINE



BENDING MACHINE



DECOILING MACHINE



DOUBLE BELT MACHINE



ROLL FORMING MACHINE



PANEL COOLING MACHINE



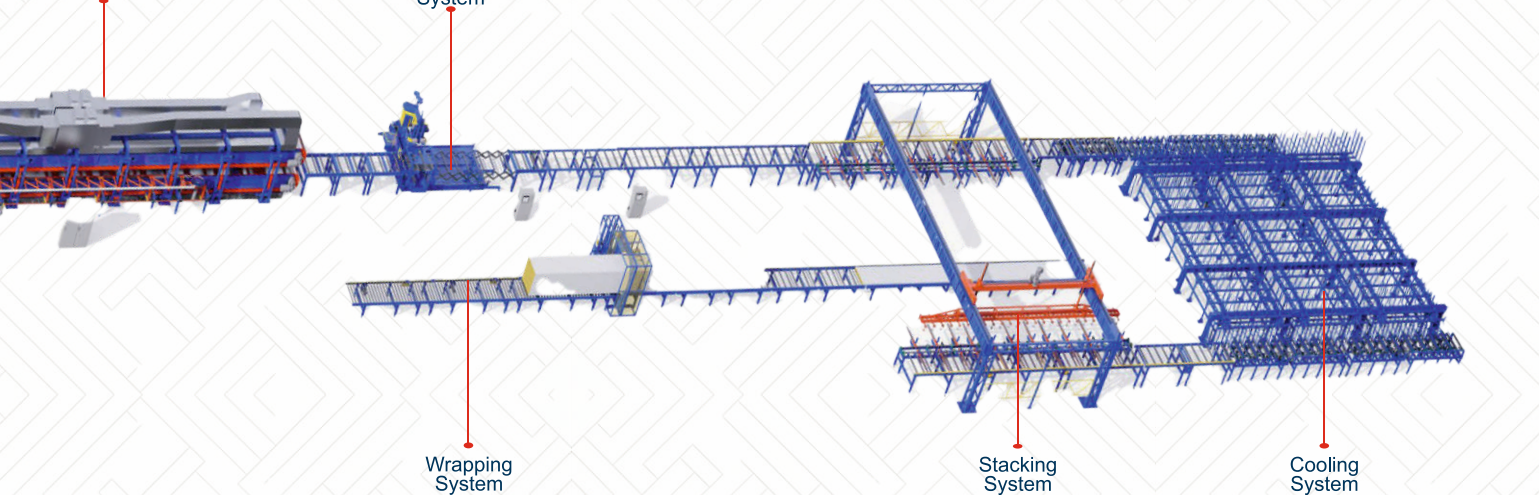
AUTO STACKING MACHINE



AUTOMATIC PANEL WRAPPING MACHINE

Double Belt System

Cutting System



Wrapping System

Stacking System

Cooling System

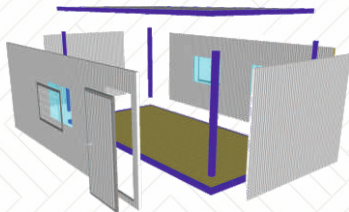
# LIFTABLE PORTA CABIN

EPACK Prefab Liftable Cabins is built on efficiently designed structures as per IS code, using steel frame and light-weight protective dry walls (sandwich panels). One liftable cabin consists of Top Frame, Bottom Frame, 4 Posts and exchangeable wall

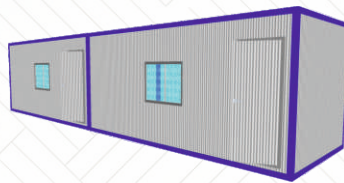
Panels which can be simply assembled in modules, with the components bolted together, and can be quickly assembled and dismantled . A great feature of this building is it comes in DIY (Do It Yourself) and can be assembled easily and it can be relocated with ease and easy in transporting.



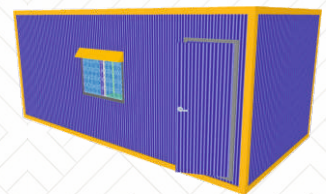
## BENEFITS



**FAST ASSEMBLING**



**FLEXIBLE COMBINATION**



**MULTIPLE COLOR OPTIONS**



**SAFE & DURABLE**



**EASY & FLEXIBLE TRANSPORTATION**



# APPLICATIONS



SITE OFFICE



STAFF ACCOMMODATION



MARKETING OFFICE



MOBILE CLINICS



LABOUR ACCOMMODATION



TOILET BLOCK

EPACK Prefab Liftable cabins are widely used as Office, Living Accommodation, Canteen, Toilet Blocks and other big open spaces to meet the needs of construction site, field work camp, social housing, disaster site and other commercial purposes.

# TECHNICAL SPECIFICATIONS

S.NO	TECHNICAL SPECIFICATIONS	
1	MS Steel Framing Structure	All the vertical & horizontal members of the container are made up of specially formed mild steel structure of 3mm thickness with two coats of primer & synthetic enamel paint. The corners are also specially designed sections of 3mm thickness with suitable lifting arrangements. The structure is normally of BLUE / GREY Color.
2	Flooring	The floor comprises of 18mm cement particle board duly fitted on sturdy galvanized steel sections designed to take a load of 150kg per sqm. PVC mat of 1.50 mm thickness is pasted on top of the cement board and bottom is painted with cement primer. The PVC mat is normally of GREY / Plywood finish.
3	Wall & Ceiling	The wall & ceiling of the container is made with 50mm thick Insulated Sandwich panels with 0.50mm thick pre painted galvanized iron sheet on both sides. The sandwich panels are normally of OFF WHITE / BLUE Color.
4	Secondary Roofing	The container is provided with an additional Roofing system to make it completely water / leaf proof. This is achieved by putting an additional Layer of insulation on top of ceiling panels & covering it with another layer of pre painted galvalume iron sheet.
5	Windows	Duly powder coated Aluminum framed clear glass sliding windows of size 1170x900mm is provided with Aluminum grill and canopy. For quantities of windows please refer to the model wise layout drawing.
6	Doors	The hinged doors are normally made up of insulated sandwich panels (same as wall panels) and duly fitted with lock, SS hinges, etc. For quantity of doors refer to the model wise layout drawing. The main door is of 900x2100mm and toilet / bath doors are of 600x2100mm. The main door is additionally fitted with one door closer & door stopper.
7	Electrical Fittings	The container is pre fitted with standard electrical points like lights, fan, 6amp socket and Air conditioner point as per the stand-and approved makes of EPACK. Refer to model wise layout for details of electrical points.
8	Cut out for Window AC	A Cut out for Window AC A cut out of the size of an Air conditioner can be done by the company on special request of the customer at the time of placement of order.

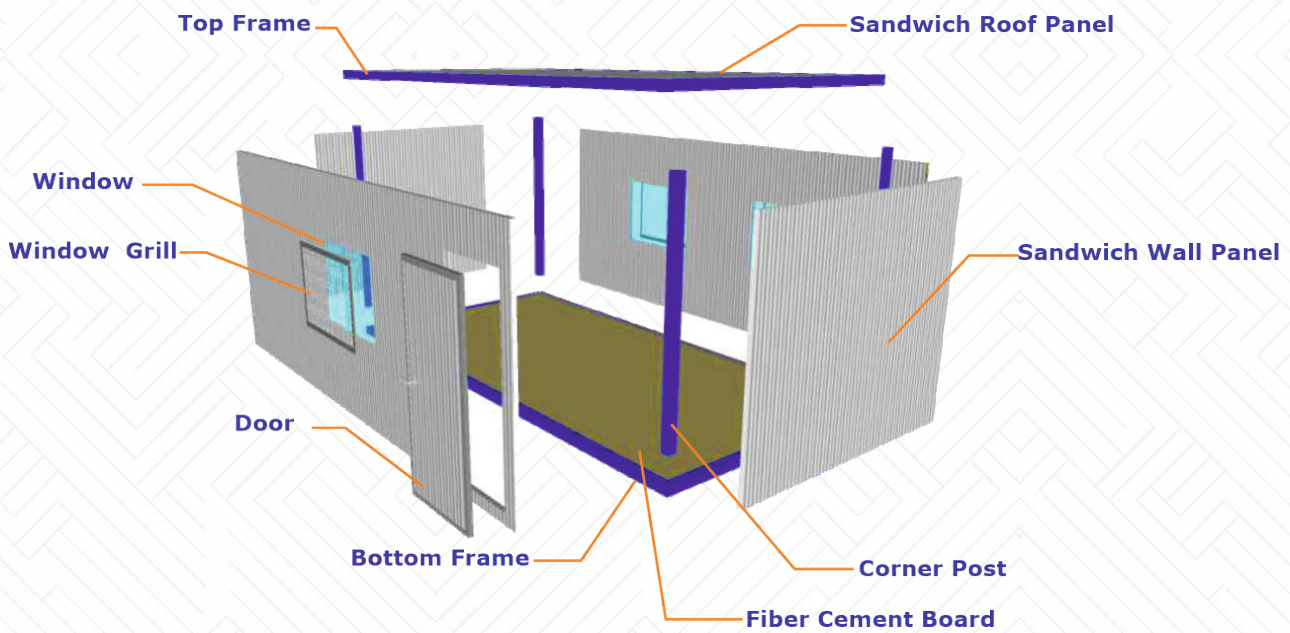
# TRANSPORTATION

4 units can be packed in a 20" shipping container and 6 units can be packed into a 40' high cube shipping container which can save 3/4 freight cost.

These units can be transport by various modes to be chosen. According to the destination and site installation conditions.

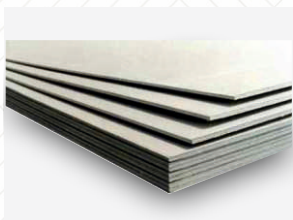


# COMPONENTS



## ROOF AND WALL PANEL

- 50mm thick sandwich panels.
- Pre painted Galvanized iron sheets on either side.



## FLOOR BOARD

- 18mm Cement fiber board of EPACK approved make.
- Can be fixed on the floor with SD Screw.



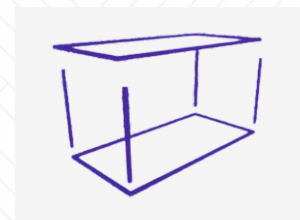
## DOOR

- Made of sandwich panels.
- Same color as walls.
- 900 X 2100mm in dimension.



## WINDOW

- Made of powder coated (white color) aluminum extruded section.
- Non toughened window glass.
- 1200 x 900mm in dimension.

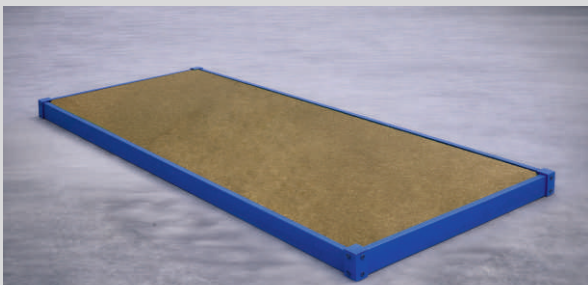


## STEEL FRAMING STRUCTURE

- Galvanized cold rolled with floor, Top and four corner post frame that support and give strength to the floor, Roof and wall Panel.

# INSTALLATION PROCESS

STEP 01



BOTTOM FRAME INSTALLATION

STEP 02



CORNER POST INSTALLATION

STEP 03



ROOF INSTALLATION

STEP 04



WALL PANEL INSTALLATION

STEP 05



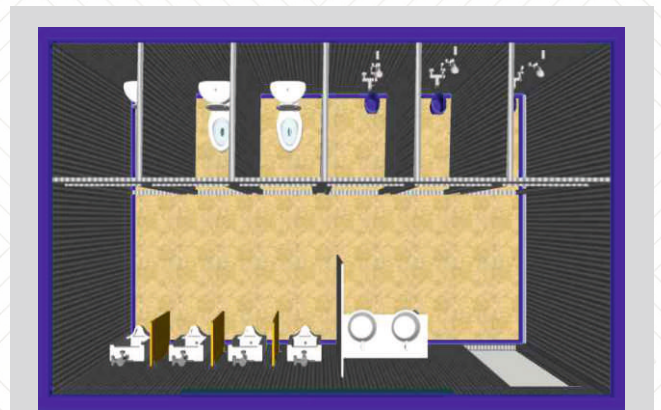
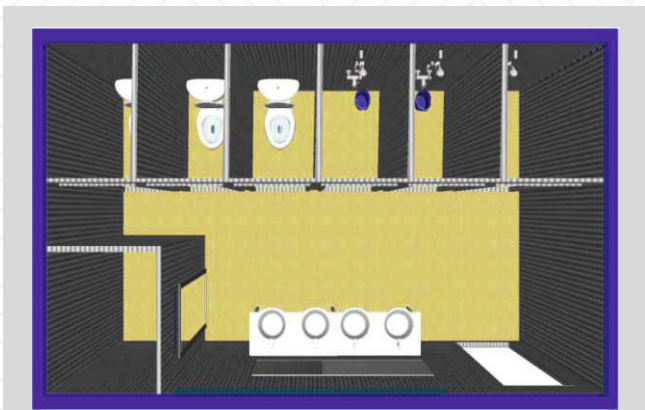
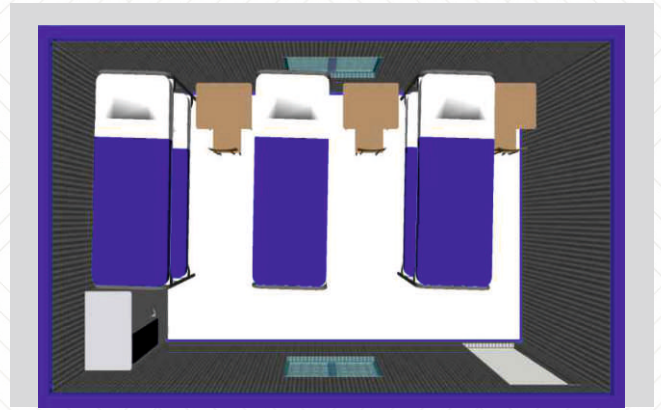
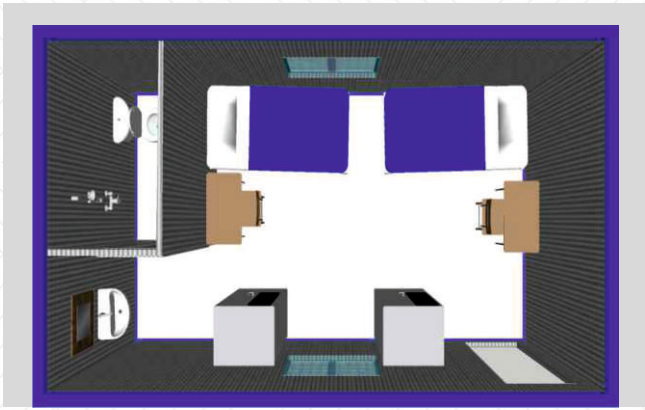
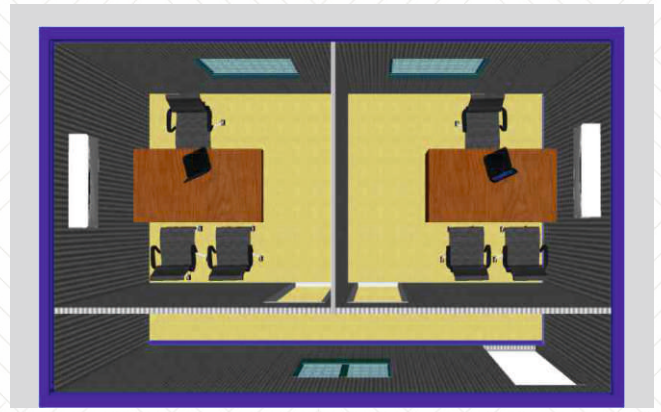
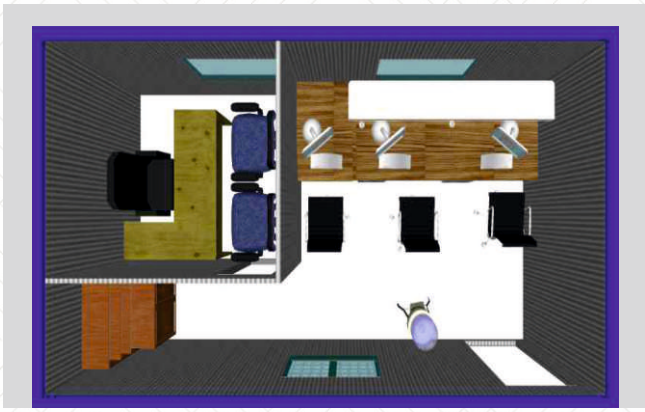
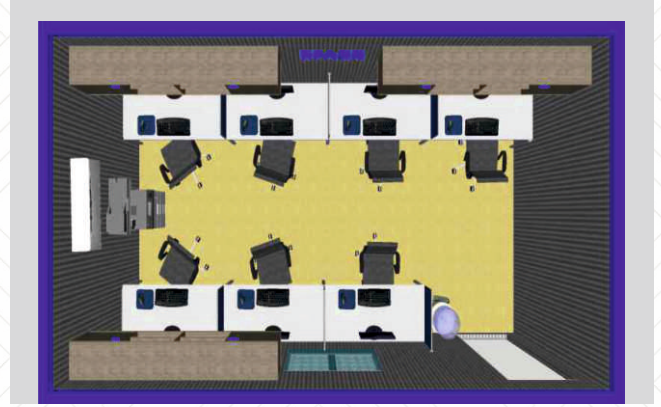
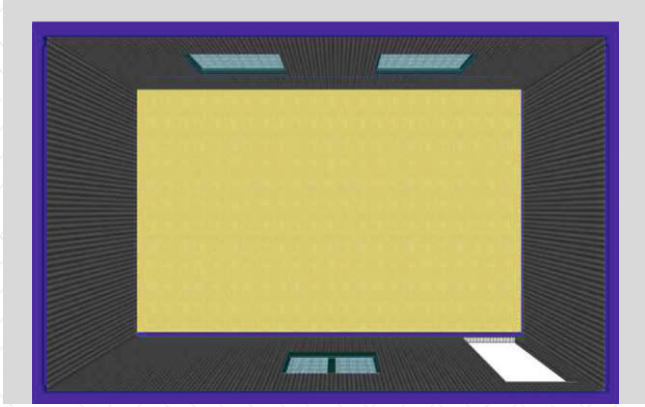
ELECTRICAL FITTINGS INSTALLATION

STEP 06



LIFTABLE CABIN

# PORTA CABIN LAYOUTS





## EMPANELMENTS



## CERTIFICATIONS



# THINK PREFAB THINK EPACK

## SALES TEAM PRESENCE

New Delhi , Jaipur, Mumbai, Pune, Vadodra, Bhubaneswar, Vapi,  
Surat, Kolkata, Indore, Bangalore, Vizag, Jamshedpur, Patna,  
Coimbatore, Chandigarh, Guwahati

## BRANCH OFFICES

- HYDERABAD:-101 A, Trendz Sapphire Building, Hitech City  
Hyderabad-500081 Telangana, INDIA
- CHENNAI:-152, 2nd Floor, Guleacha Tower, Somasundara  
Bharathi Nagar, Chennai Tamilnadu-600026, INDIA.
- AHMEDABAD:- 1013, One World West, Sardar Patel Ring Road,  
Bopal, Ahmedabad Gujarat-380058, INDIA

## MANUFACTURING PLANTS / OFFICES

- UNIT-1&2:-B 13 & 14 Ecotech-1st Extension Greater Noida-201306 Uttar Pradesh, INDIA
- UNIT-3:-SP5/128, Ghiloth Industrial Area, Ghiloth-301705 Rajasthan-INDIA
- UNIT-4:- Plot No-5, APIIC Industrial Park, Mambattu (Near Sricity),  
Tada Mandal Tirupati District-524401 Andhra Pradesh, INDIA
- UNIT-5:- Plot No- 6, APIIC Industrial Park, Mambattu (Near Sricity),  
Tada Mandal Tirupati District-524401 Andhra Pradesh, INDIA



Scan to Download  
Technical & Product Brochure



Scan to Watch Project  
Videos



+91-81 304 44466



enquiry@epack.in



www.epack.in